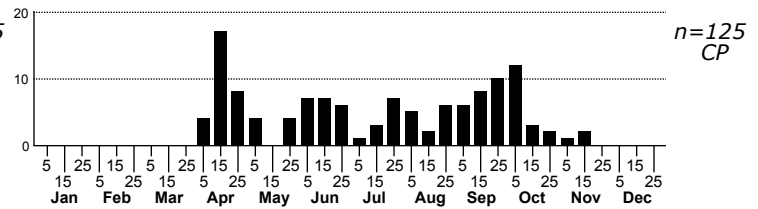
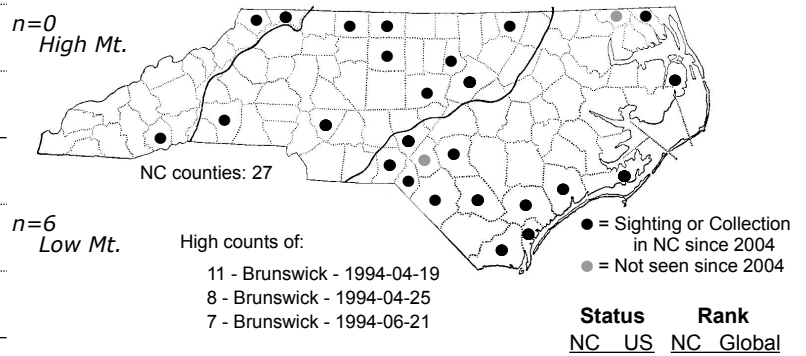
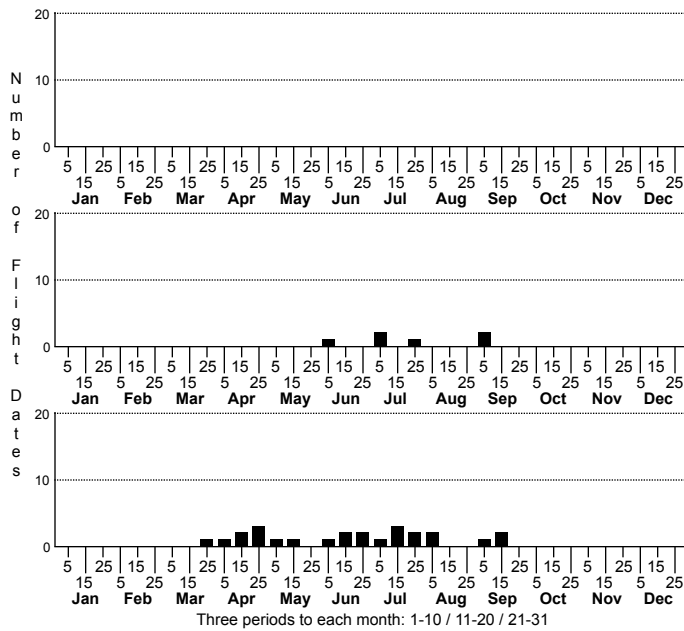


## *Lobocleta ossularia* Drab Brown Wave Moth



FAMILY: Geometridae SUBFAMILY: Sterrhinae TRIBE: Sterrhini  
 TAXONOMIC\_COMMENTS:

FIELD GUIDE DESCRIPTIONS: Covell (1984); Beadle and Leckie (2012)

ONLINE PHOTOS:

TECHNICAL DESCRIPTION, ADULTS:

TECHNICAL DESCRIPTION, IMMATURE STAGES:

ID COMMENTS: The front of the head is black and strongly contrasting with the rest of the body (Forbes, 1948). The inter-antennal ridge is heavily powdered with gray and is concolorous with the wings. The ground color of the wings is whitish or cream but they are typically heavily dusted with luteous or fuscous scales. The darker shading may be grouped into irregular lines, which when well separated allows the pale ground color to show. Black discal dots are well-developed and a terminal line of dark dots or bars, sometimes closely adjoining, is usually present.

DISTRIBUTION: Please refer to the dot map.

FLIGHT COMMENT: Please refer to the flight charts.

HABITAT: Our records come primarily from open habitats in the Coastal Plain, including maritime dunes, Longleaf Pine savannas, flatwoods, and sand ridges. We have a few records from the Piedmont, where old fields and lake shoreline habitats are used. Our few records from the Mountains come from wet meadows and one cedar barrens.

FOOD: Larvae feed on low forbs, including Gallium, Stellaria, and Fragaria (Robinson et al., 2010)

OBSERVATION\_METHODS:

NATURAL HERITAGE PROGRAM RANKS: G5 S4S5

STATE PROTECTION: Has no legal protection, although permits are required to collect it on state parks and other public lands.

COMMENTS: