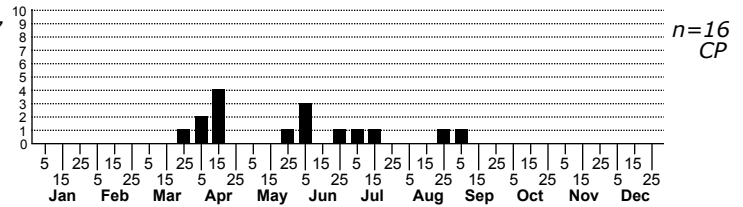
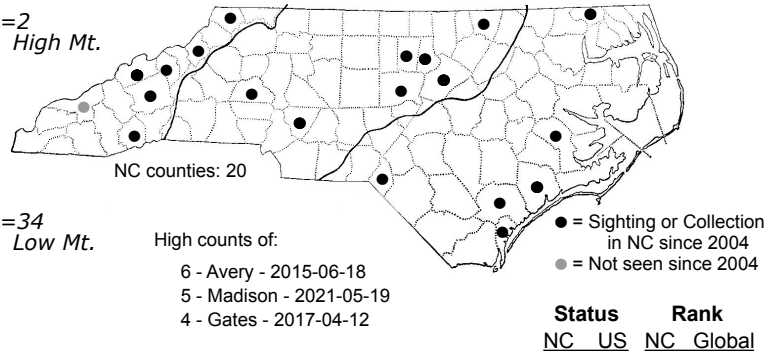
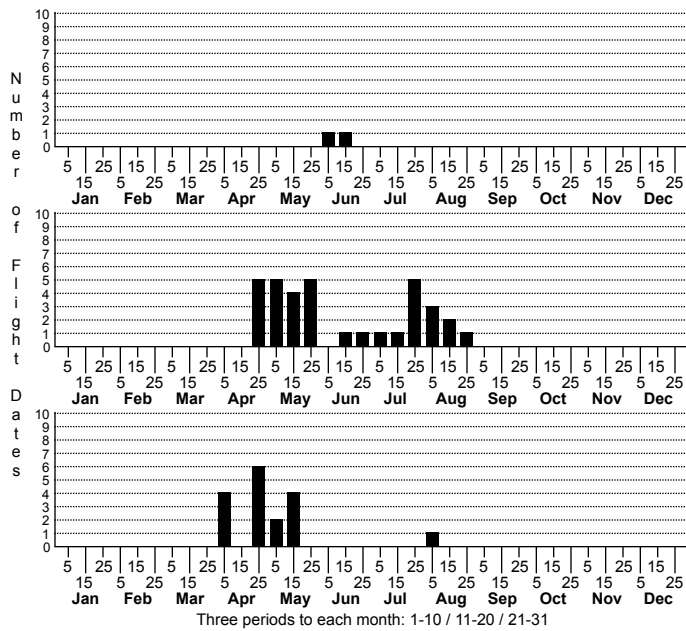


# *Zomaria interruptolineana* Broken-line Zomaria Moth



FAMILY: Tortricidae SUBFAMILY: Olethreutinae TRIBE: Olethreutini  
TAXONOMIC\_COMMENTS:

FIELD GUIDE DESCRIPTIONS:

ONLINE PHOTOS:

TECHNICAL DESCRIPTION, ADULTS:

TECHNICAL DESCRIPTION, IMMATURE STAGES:

ID COMMENTS:

DISTRIBUTION: Please refer to the dot map.

FLIGHT COMMENT: Please refer to the flight charts.

HABITAT: Most of our records come from residential neighborhoods. Some use of open shrubby areas appears to be true at some high elevation sites, such as the summit of Mt. Mitchell, Clingman's Dome, and Yellow Mountain. Records from the Sandhills may also come from areas where heaths are common. Elsewhere, however, the habitats used are less clear.

FOOD: Larvae feed on shrubs in the Heath and Legume families (Brown et al., 2008)

OBSERVATION\_METHODS:

NATURAL HERITAGE PROGRAM RANKS: GNR S3S4

STATE PROTECTION: Has no legal protection, although permits are required to collect it on state parks and other public lands.

COMMENTS: