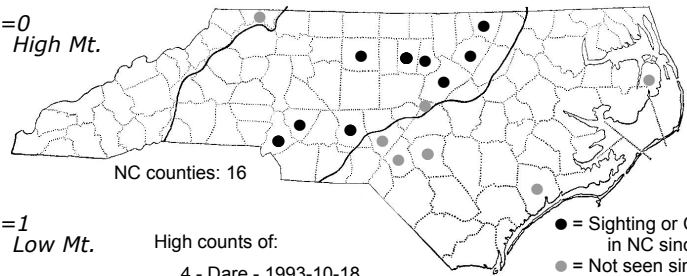
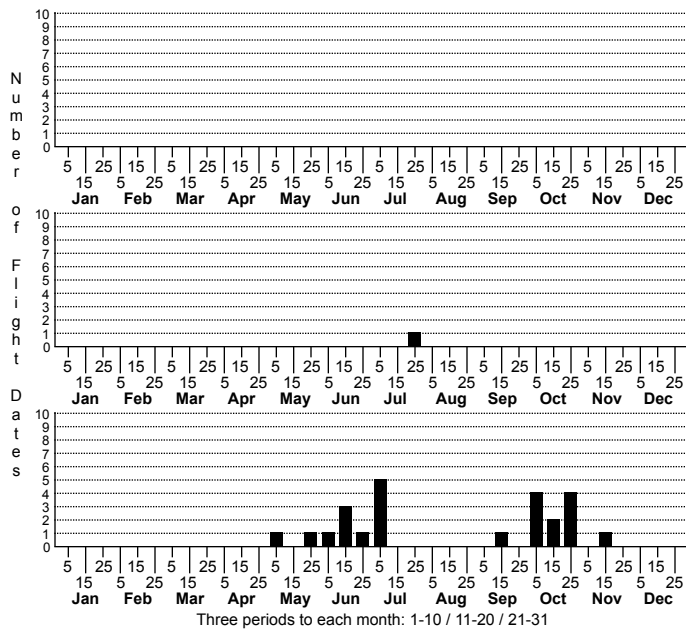
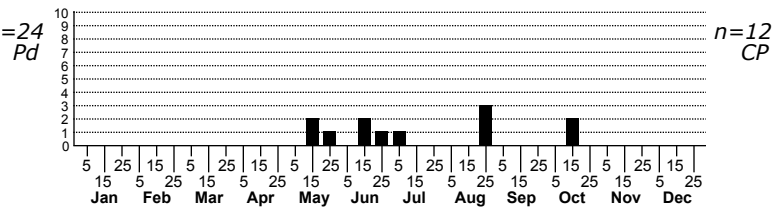


Abagrotis magnicipida One-dotted Dart



Status Rank
NC US NC Global



FAMILY: Noctuidae SUBFAMILY: Noctuinae TRIBE: Noctuini
TAXONOMIC_COMMENTS:

FIELD GUIDE DESCRIPTIONS:

ONLINE PHOTOS:

TECHNICAL DESCRIPTION, ADULTS:

TECHNICAL DESCRIPTION, IMMATURE STAGES:

ID COMMENTS: The ground color is typically a brick red. The spots and lines are usually poorly marked but there is a conspicuous black patch located on the costa just before the subterminal line; a black spot may also occur in the lower part of the reniform. Labial palpus is black on the sides (Lafontaine, 1998).

DISTRIBUTION: Please refer to the dot map.

FLIGHT COMMENT: Please refer to the flight charts.

HABITAT: Our records come from a wide variety of habitats, ranging from the barrier islands to montane river valleys. Both open, herb-dominated habitats and closed-canopy forests are used, as are both nutrient-rich and nutrient-poor habitats.

FOOD: Lafontaine (1998) listed Choke Cherry (*Prunus virginiana*) as a host. However, Wagner et al. (2011) stated that larvae are polyphagous, feeding on many species of both herbaceous and woody plants. We do not have any feeding records in North Carolina.

OBSERVATION_METHODS:

NATURAL HERITAGE PROGRAM RANKS: G5 S4S5

STATE PROTECTION: Has no legal protection, although permits are required to collect it on state parks and other public lands.

COMMENTS: